

Nature Inspired Commercial Playgrounds





Risk and Reward:

Learn! Grow!

The picture at right says a lot to me. It is of my wife Marcye and my daughter Cayla. It represents what we offer as parents and caregivers and it represents what it means to be a child. We teach, we coach, we love, we encourage, we prepare in every way we possibly can . . . but in the end we need to just let go. Ultimately, it is the child that needs to strive, to learn, to make choices, take chances and to risk in order to achieve and grow as a healthy little person.

We are Social Entrepreneurs; providing opportunities that help children achieve and grow in healthy ways is what we do here at Bears Playgrounds . . . our mission is inspired and focused:

“to create fantastic Nature Inspired Playgrounds and other products which enhance children’s environments.”

Sincerely,
Danny Bears



Table of Contents

Construction Features	4-7
Nature Inspired: Bold, Strong & Built to Last	4-5
Design Philosophy: Why Wood	6-7
Playground Models	8-19
Danny’s Love, Life, Adventure	8-9
Dreamin’ Big	10
Hundred Acre Wood	11
Swiss Village	12
Ponderosa	13
Proudest Monkey Village	14
Proudest Monkey	15
Cowboy Up	16
Little Cowboy Up	17
Little Lumberjack Options: 6-23 months	18-19
Independent Play Activities	20-25
Swing Sets	26-27
Customize Your Design	28-35
Ways Up	28-29
Ways Down	30-31
Ways Across	32-33
Overhead Events	34
Other	35
How to Buy a Bears Playgrounds	36-37
Shipping and Installation	38-40
Playground Maintenance Instructions	41
Operating Instructions / Warranty	42-43
Testimonials	44-45
About Us	46-47
In Loving Memory of Danny Bears	Back

Construction Features:

Nature Inspired

With our playgrounds we have created a “hybrid” or balance between the innocent, natural adventure of playing in the forest and the structure and safety required by today’s safety standards. We have been building “Nature Inspired Playgrounds” since long before it was trendy, because we just knew it was the right thing to do. We have always understood that renewable, natural materials (i.e. TREES) are far greener than powder coated steel and melted plastic milk jugs.

To make our **nature inspired playgrounds** we use Natural Materials, like our beautiful, whole, round Northern White Cedar logs with all their natural features. Our Bold, Strong and Built to Last architecture beautifies children’s spaces, while capturing their imagination.

Our Nature Inspired products and natural materials help stimulate a child’s imagination and enthusiasm for nature. In short, our products facilitate learning, help build social skills, create opportunities for exercise and by virtue of our unique designs and materials we provide children with a unique connection to the great outdoors.



Bold, Strong, and Built to Last

Our Log Construction is not just beautiful, it is strong too. Our posts are made from sturdy whole logs, approx 5” in diameter. Our cedar logs have a fat end and a skinny end like a tree (instead of a manufactured dowel), they have gorgeous wood grain, checking, knots, crooks, curves, etc. Those who are familiar with log construction know that it is subject to the natural process of “checking.” Checking, or cracks, occur across or through the growth rings as they release moisture. This is not a defect in the wood as it does not affect the structural integrity. Instead, it is considered a part of the log’s rustic natural look and adds to the uniqueness of each piece.

Mortise and Tenon (old school joinery) This classic joinery style is timeless and super strong. Rarely, if ever, used by the competition because it requires old school craftsmanship.

As a general rule, when you see triangles used in construction you are looking at extra strength. Bears Cedar Log Playgrounds are loaded with lots and lots of overbuilt structural knee braces for a bold look and extra strength. Many of our structures and events are built for surface mount installation with in-ground anchoring to meet ASTM.



“Checking”

Gorgeous wood grain!

Natural taper to each log

Mortise and tenon joinery

Structural knee brace

Anchoring

Construction Features:

Beautiful Style

Why Wood: Furniture, boats, structures and art of all types have been made from wood since humans have had opposable thumbs. In America, wood is the default material for the houses in which we live. Wood is literally alive in our landscape. It defines the meaning and spirit of the word “renewable.” Someday, at the end its useful life, many products made from wood will return to mother earth in a natural way that is non-polluting, self sustaining, organic and **truly green** because it represents the natural cycle of life. Powder coated steel and plastic products simply can't make this claim.

When used to make our beautiful log playgrounds wood is enormously bold, strong and built to last. In fact, we back it with a 10 year guarantee. Our nature inspired log play events add visual harmony to most landscapes regardless of the architectural style of the surrounding structures. Nature and natural products are never out of style.

Beyond physical properties, the emotional power that our wood possesses in its history, its organic qualities, and ability to create peaceful beautiful spaces, make it one of the most adoring materials in the universe. The tactile and sensory properties of the materials used in our unique playgrounds help suggest play themes and re-connects children with Nature in ways other materials cannot.

That's why wood!



Design Philosophy

Round is Good

Unlike square milled lumber, our round cedar is beautiful and baby smooth. Round logs have no sharp corners like milled lumber, just rub a dub-dub soft cedar; perfect for playgrounds. Logs are peeled, planed and sanded. Our Cedar is naturally beautiful, and does not contain any arsenic. Unlike other wood species, the qualities of our round cedar logs make it very difficult to splinter and penetrate human skin.



When it comes to natural weather resistance, our cedar is about the

best you can do in natural products. To top it all off, we have chosen to add additional protection by staining your playground. The color is a beautiful, natural, semi-transparent, brown stain. It enhances the beauty of the wood and highlights the wood grain. The stain is water based and the brown pigment color helps protect against harmful UV rays in the sunniest of climates. The penetrating qualities of the stain also help to protect against snow and moisture.

Like you will find on the best built decks in America, we use modern Composite Decking materials on most of our floors, rock climb walls and other high wear areas so that even a bare-footed or bare bottom baby is safe as can be.



Danny's Love, Life, Adventure

Danny's Love, Life, Adventure model begins with 4 structures connected with 3-4 bridges to make a square, "T", "L", or straight line shape



Glade Springs
Resort, WV



Frontier Town
Campground & Equine, NY

Danny's Love, Life, Adventure



Meacham Lake
Campground, NY

Kenneth L. Wilson
Campground, NY



For a complete look at our gallery of work, go to . . . www.bearsplaygrounds.com

Dreamin' Big

The Dreamin' Big model begins with 3 structures connected with at least 2 bridges to make a straight line or "L" shape

Jetty Park at
Cape Canaveral, FL

Warren Willis United
Methodist Camp, FL

Mountain Empire
School, CA

Hundred Acre Wood

The Hundred Acre Wood model begins with 2 Ponderosa structures connected with most commonly a high bridge, or sometimes with a lower bridge

IDEA Tres Lagos
School, TX

Fort Whaley RV Resort
& Campground, MD

Yogi Bear Kozy Rest
Campground, PA

For a complete look at our gallery of work, go to . . . www.bearsplaygrounds.com

Swiss Village

The Swiss Village model combines our Ponderosa and Proudest Monkey structures connected most commonly with a suspension bridge

Navesink Woods Apartments, NJ



Mason Dixon Historical Park, WV

Nick's Mini-Golf, MD



Ponderosa

The Ponderosa model contains a 48" deck and 84" deck with access components between the two

Open Door Mission, NY



Parkview Junior Academy, NY



Bristol Harbor Village, NY



Baldwin ADK Mountain Meadows, NY



Proudest Monkey Village

Great Wolf Lodge , GA

The Proudest Monkey Village model combines 2 of our Proudest Monkey structures connected by a variety of bridge types

Wayne County Lyons
Head Start, NY

The Young School, MD

Faith United
Methodist Church
Head Start, PA

Crossroads
Christian School, CA

Proudest Monkey Tree Fort

The Proudest Monkey model contains a single 48" deck

Todders
Workshop, NY

Potomac Crescent
Waldorf School, VA

Garden State Academy, NJ

Whispering Pines
Preschool, NY

Expressive Beginnings Childcare, NY

For a complete look at our gallery of work, go to . . . www.bearsplaygrounds.com

Cowboy Up

The Cowboy Up model contains a 36" deck and 60" deck with access components between the two

Growing Circle Montessori, NY



Lima Park, NY



Arden Park, FL

Little Cowboy Up

The Little Cowboy Up model contains a ground level and 36" deck with an access component between the two



HoJack Ice Cream Shack, NY



Titusville Early Head Start, FL

Temple Emanuel of
the Pascack Valley, NJ



Little Lumberjack Village

Other Options

Special Products
for our youngest customers!

Best for ages 6-23 months!

Our Little Lumberjack options include combining one or more 24" decks with various climbers, bridges and slides.



Little Lumberjack Village with Shade Umbrellas



Little Lumberjack Village with Surfacing Package

Touch, feel, crawl
on nature



Little Lumberjack



Massive Little Lumberjack Village!



Playhouse



12'x12' Playhouse



Straight Little Lumberjack Village



2' Proudest Monkey



Log Patio



Hill Slide Package

Independent Play Activities

Stand Alone or Link

- Green Circle = easiest
- Blue Square = intermediate
- ◆ Black Diamond = difficult
- ◆◆ Double Black Diamond = extremely difficult

■ TRIPLE LOG BALANCE BEAM



■ SINGLE LOG BALANCE BEAM ■ PORTABLE LOG BALANCE BEAM

■ FREE-STANDING TREE HUGGER



◆◆ FREE-STANDING RING TREK



◆◆ STILTS



◆◆ HIGHER MONKEY BARS (84")

◆ LOWER MONKEY BARS (60")



◆ *MUSHROOM HOPPERS



◆ TREE HOPPERS



■ PARALLEL BARS



ASK ABOUT OUR LINE OF MASSIVE CLIMBING BOLDERS!



Stand Alone or Link



◆◆ LARGE MOUNTAIN CLIMBER



■ MINI MOUNTAIN CLIMBER

● CHIN UP BARS (SINGLE, DOUBLE OR TRIPLE)



◆ SMALL MOUNTAIN CLIMBER



■ FREE STANDING SUSPENSION BRIDGE

■ FREE STANDING BIG ROPE V-BRIDGE

● FREE STANDING FLAT BRIDGE



◆◆ FREE STANDING CAT WALK BRIDGE



■ FREE STANDING BURMA BRIDGE



■ 8' or 12' SPIDER WEB CLIMBER



Independent Play Activities

Stand Alone or Link

- Green Circle = easiest
- Blue Square = intermediate
- ◆ Black Diamond = difficult
- ◆◆ Double Black Diamond = extremely difficult



● **HEAVY DUTY STEERING WHEEL**



● **TETHER BALL**



● ***UP, OVER AND DOWN LOG**

● **BEARS SAFETY SIGN**
2-5 | 5-12 | 2-12



● ***TREE PLAY CLIMBING LOGS**

ALL OF OUR FREE STANDING IMAGINATION PANELS CAN COME IN SURFACE MOUNT OR IN-GROUND MOUNT

● **BALL DROP PANEL**

● **DRY ERASE PANEL**



● **PERCUSSION PANEL**

● **PAINT STATION PANEL**



● **TIC TAC TOE PANEL**

● **PLAY CENTER (CHOOSE ANY 3 PANEL TYPES)**



● **BUBBLE PANEL**

● **BUILT-IN PICNIC TABLE**



● ***BIG TREE TABLE AND CHAIRS**



● ***NATURE THEATER AND STUMP CHAIRS**

* ITEMS THAT ARE CARVED FROM LOGS ARE ARTISTICALLY CREATED USING REAL LOGS. THEREFORE, THEY WILL ALL BE UNIQUE IN SHAPE AND SIZE

● ***STUMP TABLE CHAIRS**



ASK ABOUT CUSTOM ENGRAVING ON BEARS BENCHES



● ***BEARS LIVE EDGE BENCH**



● **BEARS PT BENCH**



● **PICNIC TABLE**



Independent Play Activities

Stand Alone or Link

... multiple elements can be functionally linked to make an obstacle course ...

- Green Circle = easiest
- Blue Square = intermediate
- ◆ Black Diamond = difficult
- ◆◆ Double Black Diamond = extremely difficult

● FAUX
CHECKER
TABLE
AND
CHAIRS



● FAUX
STUMPS

● UNEVEN LOG SANDBOX



● FAUX
TREE
TUNNEL



● 8'X8' OR
4'X4'
SANDBOX
WITH
COVER

◆◆ FALLEN TREE FOREST CLIMBER



● MUD
KITCHEN



● GAGA PIT



● SHIPS BOW (SOMETIMES USED AS A SANDBOX)



● LARGE (5-12) OR SMALL (2-5)
NET CLIMBING WALL



Swing Frame Options

■ **FREE STANDING WOODEN SWING SET
1 BAY**



■ **FREE STANDING WOODEN SWING SET
2 BAYS**



■ **FREE STANDING WOODEN SWING SET
3 BAYS**



■ **FREE STANDING
LOG SWING SET
AVAILABLE IN
1 OR 2 BAYS**



■ **STEEL ARCHED
FRAME SWING
SET**

■ **STEEL ARCHED
FRAME TIRE
SWING SET**



Swing Options

- Green Circle = easiest
- Blue Square = intermediate
- ◆ Black Diamond = difficult
- ◆◆ Double Black Diamond = extremely difficult

■ **BELT
SWING**



● **FULL
BUCKET
SWING**



● **HALF
BUCKET
SWING**



■ **TIRE
SWING**



■ **BIRDS
NEST
SWING**



● **SPECIAL
NEEDS
SWING**



Customize Your Playground

Choose Your Ways Up

Choose the elements that attach to the outside of your playground structure

- Green Circle = easiest
- Blue Square = intermediate
- ◆ Black Diamond = difficult
- ◆◆ Double Black Diamond = extremely difficult

● **BABY ROCK CRAWL**

■ **SMALL ROCK WALL**

◆ **LARGE ROCK WALL**

◆◆ **INVERTED ROCK WALL**



◆ **SMALL CARGO NET CLIMBER**

◆◆ **LARGE CARGO NET CLIMBER**

● **ADA TRANSFER STATION**



◆◆ **LARGE LOG ROPE CLIMBER**

◆◆ **SMALL LOG ROPE CLIMBER**

● **EASY STAIR CLIMBER**

● **ANGLED CLIMBER**



● **GENTLE BUMPY LOG CLIMBER**

■ **STEEPER BUMPY LOG CLIMBER**

◆ **MEDIUM BUMPY LOG CLIMBER**

◆◆ **BUMPY LOG RAPPEL**



◆ **COIL CLIMBER**

◆◆ **SPIRAL CLIMBER**



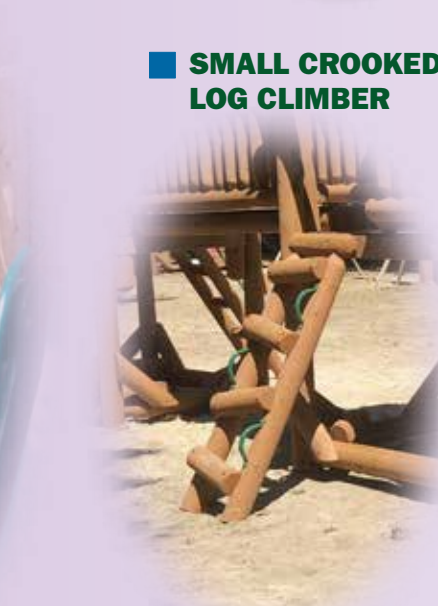
◆◆ **TELEPHONE POLE CLIMBER**

◆◆ **LARGE TREE HUGGER**

■ **SMALL TREE HUGGER**

◆ **LARGE CROOKED LOG CLIMBER**

■ **SMALL CROOKED LOG CLIMBER**



Customize Your Playground

Choose Your Ways Down

- Green Circle = easiest
- Blue Square = intermediate
- ◆ Black Diamond = difficult
- ◆◆ Double Black Diamond = extremely difficult

● 2' STRAIGHT SLIDE



● 3' DOUBLE SLIDE



● 3' EXTRA WIDE SLIDE



■ 5' STRAIGHT SLIDE



◆ 6' OR 7' STRAIGHT SLIDE



◆ 6' WAVE SLIDE



● 3' RIGHT TURN SLIDE



● 4' RIGHT TURN SLIDE



● 3' STRAIGHT SLIDE



MOST SLIDES ARE ALSO OFFERED IN TAN COLOR. ASK ABOUT YOUR COLOR OPTIONS.



◆ 6' OR 7' TUBE SLIDE



◆◆ FIRE POLE



● 4' WAVE SLIDE



● 4' STRAIGHT SLIDE



● 4' DOUBLE SLIDE



Customize Your Playground

Choose Your Ways Across

Choose the elements that attach to the outside of your playground structure

- Green Circle = easiest
- Blue Square = intermediate
- ◆ Black Diamond = difficult
- ◆◆ Double Black Diamond = extremely difficult

■ **SUSPENSION BRIDGE WITH WOOD RAILS**



● **HIGH BRIDGE WITH WOOD RAILS (ALSO SHOWN WITH OPTIONAL BUBBLE PANEL)**



■ **SUSPENSION BRIDGE WITH NET RAILS**



● **HIGH BRIDGE WITH NET RAILS**



■ **BIG ROPE V-BRIDGE**



● **FLAT BRIDGE WITH WOOD RAILS**



◆◆ **BURMA BRIDGE**



◆ **BUMPY BRIDGE WITH WOOD RAILS**



Choose Your Overhead Events

Other Options

- Green Circle = easiest
- Blue Square = intermediate
- ◆ Black Diamond = difficult
- ◆◆ Double Black Diamond = extremely difficult

◆◆ HIGHER MONKEY BARS (84") WITH ACCESS INTO 48" DECK



◆ LOWER MONKEY BARS (60") WITH GROUND LEVEL ACCESS ONLY



● CHIN UP BARS



◆◆ HIGHER MONKEY BARS BETWEEN STRUCTURES



◆◆ COMMERCIAL STEEL TRACK RIDE



● LANDING PLATFORM



◆◆ MONKEY BARS AND RING TREK COMBO



◆◆ SINGLE RING TREK



◆◆ DOUBLE RING TREK



1. CANVAS ROOFS: These are waterproof and provide shade. They come standard on most Bears Playgrounds. They are hemmed in on all four sides for extra strength and have grommets every few inches on two sides for fastening.

2. WOODEN ROOF UPGRADE: These are beautiful, durable and provide shade for the little ones. They are a very common an upgrade from our standard tarp roofs. The wooden roofs are more resistant to vandalism

3. TRANSPARENT FABRIC ROOFS: Durable, semi-transparent green fabric roof option. Rain/water will penetrate through.

4. NET BARRIERS: These come standard around every platform that does not contain an optional activity. Our Net Barrier provide excellent visibility in and out of the structure for supervision. Our barrier nets are made from a material similar to that used to make truck tarps and trampolines. They are super strong and durable, with reinforced hem and grommets on all four sides.

5. WOODEN SPINDLE BARRIER UPGRADE: Wooden Rails are a popular upgrade from our barrier nets for commercial applications because they are so strong and vandal resistant. They are also built higher than our barrier nets.

6. HOOD BARRIERS: Hoods combine a top bar, with vertical spindles to narrow wider openings around skinner events like slides, angled climbers and crooked log climbers. They can also be used to offset an event to one side of a wide opening.

7. PLAY PANELS: Tic Tac Toes, Ball Drops, Bubble Panels and Percussion Panels are available as structure wall panels at deck level or ground level, as well as independent portable or in ground mount panels.



Customize Your Design

How to Buy

Easy design and ordering process...

**by phone,
e-mail, or in person.**

Cash, Check or



By phone:

1-877-807-7529 (PLAY)

By e-mail:

info@bearsplaygrounds.com

In person:

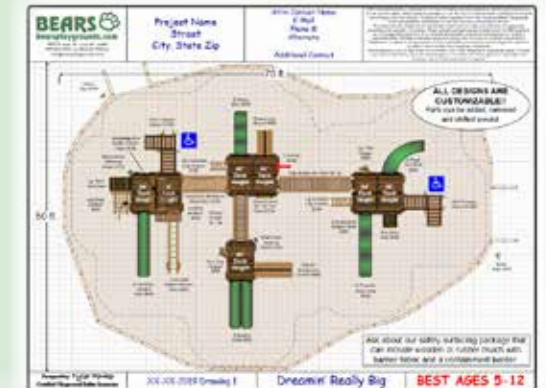
7577 East Main, Lima NY 14485

The Process

"The Process" begins with a phone call or e-mail from you. We then produce a rough "concept drawing." There is no cost or obligation for the drawing. Our concept drawing will include information like the size of the areas, itemized costs of the various components and events, shipping and / or delivery and installation cost. Drawings usually undergo revisions as more information becomes available to us, such as space available, budget, ages of children using the playground, and your preferences. The process continues until we've designed the perfect, customized, nature inspired playground for your needs.

Finally the drawing becomes our shop manufacturing and installation blueprint. Manufacturing through installation, all processes possible are controlled "in-house."

Concept drawing



Yes, that's right, we still believe that great things can be created right here in the USA

Installation & Shipping Options

We are *specialists*, playground builders, masters of our trade!

The photo below shows a Bears Playground crated and ready for shipment by common carrier consolidated load or LTL.



A Bears Playground loaded and ready for delivery and installation by our crew.



We have installed our playgrounds clear across the country and shipped as far away as Morocco (for the royal family) and Cairo, Egypt. So if you want a Bears Playground we can certainly get you one. There are two common ways to get a playground to you: we can bring it and install it or we can ship it for others to install.

1. INSTALL: The Bears Playground Crew can bring the playground in a semi built form to your site with a mini track loader (walk behind forklift) and tilting trailer. Pre-building the playground in our shop saves time on your site and helps ensure quality. It is an advantage most companies cannot offer. Clear access for the "pre-built" is important.



Installation & Shipping Options

2. NATIONWIDE LONG HAUL DELIVERY & INSTALL: Some customers really like the idea of having the Bears Playground Crew do the install. Our crews are really, really good at what they do!!! Usually we pack up the truck with our tools and your playground and hit the road. For jobs that are really far away, we sometimes ship the playground and fly the crew in. These projects are priced on a case by case basis depending on the details of the project. Price is usually calculated based upon our local install charge plus a calculation for mileage, hotels, etc.



National bulk delivery of our Certified Playground Mulch produced by regional manufacturers is available.



Most shipped crates are opened and unloaded by hand



If available, shipped crates can be unloaded with a machine

3. SHIPPING - NATIONAL & INTERNATIONAL: You also have the option to have us ship the playground to you for your own self installation. We will still build and pre-install large portions of your project completely in our shop to make sure everything is just right. Then we take it apart and load it up into a really big crate or two or three depending upon the project. Then we load it on its way for installation by others. Sometimes the owner unloads, and sometimes the installer does, depending upon the arrangements you make.

Building your playground in our shop prior to shipping is an extra quality control step that we take to help ensure your playground is just

right. It also makes it possible for us to ship you larger assembled sections, instead of a stack of lumber and a pile of hardware (like many of our competitors do).

Installation is much simpler than it may be with other brands because of this step. Shipping dimensions and weights vary by model and specific options chosen. Crates are typically 12' long x 4' wide x 7' high, weighing between 1,500 and 2,800 lbs.

Shipping with PODS is available in most areas. This always you to hand unload the container at ground level at your leisure over the course of a couple weeks

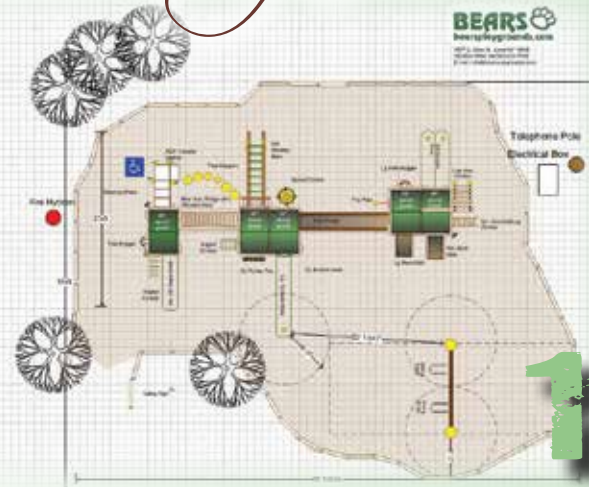


4. UNLOADING THE TRUCK : When we ship playgrounds, most clients will end up hand unloading the crates piece by piece in order to get it off of the truck. The agreement we have with the shipper requires them to contact you for an appointment. Your delivery address must be able to accommodate a big tractor trailer delivery truck. It is your responsibility to unload the truck. Our agreement with most of the trucking companies allows a max of two hours for this before additional charges start kicking in. As you know we pre-assemble / pre-install most of the playground for you.

This saves you time and is a big benefit to you but that means some of the pieces are big and heavy. Most places we ship to do not have loading docks, forklifts or Bobcats to help unload, so it is a good idea to have some strong people on hand to open up and hand unload the crate(s). Some customers have us ship directly to the installers facility for transport to the site when they are ready. If you do rent a Bobcat, you would ideally want it to be able to handle 3,000 pounds. Keep in mind, our crates are about 12 feet long, and you would only be able to access it at one end from the back of the truck. The 12' length may prevent you from being able to completely lift the entire crate, so you may have to break open the crate by hand even with a Bobcat.

Start to Finish

The making of a Bears Playground



Maintenance Instructions

9-28-2015 **MAINTENANCE INSTRUCTIONS & CHECK LIST:** because the safety of this playground equipment and its suitability for use depend upon good inspection and maintenance, this check list should be strictly followed, in a systematic manner by personnel familiar with the playground. Make copies of this check list and save for your records after each inspection. You should also refer to to Consumer Product Safety Commission publication 325 and A.S.T.M. 1487 latest version for guidance on your playground equipment. Completed by _____ Date _____

1. Check the depth of loose fill safety surfacing before each use especially in high traffic areas. Wooden Playground mulch provided by Bears should be maintained at > 9-12" for most equipment, rubber mulch at > 6". (Check with the manufacturer or supplier for detail of their supplied product). This can be facilitated by marking the ideal surfacing depths on equipment posts. Displaced material should be raked back into proper place. Consider using impact attenuating safety mats under swings and slides and other high traffic areas.

2. Follow the above recommendations on safety surfacing.

3. Check for user modifications to the equipment such as strings or ropes tied to the equipment, swings looped over the bar, etc. Correct modifications.

4. Check for clothing entanglement hazards, such as open S-Hooks, protruding bolts and other hazardous protrusions.

5. Check all safety net barriers, grommets and fasteners of all types for rips and tears. Tighten all rope, lines, nets and spider webs as needed. Repair or get replacement from the manufacturer.

6. Tighten all nuts and bolts, and other hardware as required. Check anchoring to ensure general stability of playground.

7. Check all wood for splinters, sand smooth as needed.

8. Check for missing or broken components (e.g. hand grips, protective barriers, nets). Repair or replace as needed.

9. Check for missing or damaged protective coverings on bolts, pipes, edges, and corners. Replace if they are loose, cracked, or missing.

10. Oil all metallic moving parts.

11. Check swing seats, ropes, cables, and chains for wear, rust, or deterioration. Replace as needed. For safety, replace swing seats and chains annually.

12. Check to ensure no crush and shear points on exposed moving parts.

13. Check metal parts for rust. If found, sand and repaint using a non-lead-based paint meeting the requirements of Title 16 CFR Part 1303.

14. Check warning label stickers to ensure they are still in place and legible. Call Bears Playgrounds for replacement stickers if necessary.

15. Check openings on playground equipment to ensure there are NO openings that are greater than 3 1/2" or less than 9". Check that there are no openings (gaps) at the tops of slides that will allow strings or ropes to get caught.

16. Ensure the entire area has satisfactory drainage, especially near the base of wooden posts and where posts are buried in mulch or in heavy use areas, such as under swings and at slide exits.

17. Checking for cracks running with the grain are to be expected in log construction. If desired, the gaps can filled with brown colored paintable caulk or exterior construction adhesive.

18. To protect against sun and moisture, re-stain as needed to prolong the useful life of the wooden products.

19. To help prevent wood deterioration below the surfacing: ensure cement footers and earth are sloped any from post, rake back loose fill safety surfacing and apply a high quality water sealer all the way to the ground. Once dry, rake the loose fill material back into place.

20. If wooden surfaces become slippery, it is possible to create a saw blade texture pattern or by apply a textured deck coating.

21. Due to periodic updates in Safety Standards as well as anticipated fatigue or environmental degradation, consider complete replacement or retrofit within 10-15 years depending upon local conditions and maintenance.

Operating Instructions

Observing the following statements and warnings reduces the likelihood of serious or fatal injury.



1. We strongly recommend that you save these instructions for future reference.
2. We recommend that you read, become familiar with and follow the Public Playground Safety Handbook Publication 325 put out by the Consumer Product Safety Commission. The handbook is designed to promote greater safety awareness among those who purchase, install and maintain public playground equipment.
3. Bears Custom Commercial playgrounds can be specifically tailored for ages 2-5, 5-12, or 2-12. Bears always recommends separate, age appropriate, structures or areas for ages 6 – 23 months, and for ages 2-5 and for 5-12 when possible.
4. The owner / operator is responsible for selecting the location of the playground. At your request, we can advise you, and provide you with drawings that show the proper safe “use zone”, but the final location choice is yours. Please consider nearby accessible hazards such as roads, bodies of water, drop offs, cliffs, shade from the sun, when selecting your site; also consider drainage. Place equipment on level ground not less than 6’ from any structure or obstruction such as a fence or building. Overhead obstructions such as overhanging branches, or electrical wires must have greater than 7’ of clearance. Swings sets should have no less than two times the height both to the front and the back of the swing set. Slides greater than 6’ high require the use zone in front of the exit to be at least equal to the vertical height of the slide up to a maximum of 8’.
5. The Property owner must prevent children from using the equipment until properly and completely installed with safety surfacing. Do not use this equipment until properly installed.
6. Close adult supervision for children of all ages is required. Instruct children to use the equipment properly.
7. WARNING: Installation over a hard surface such as concrete, asphalt, or packed earth could result in serious injury or death from falls. The owner / operator shall maintain the protective surfacing within the use zone of each play structure in accordance with specification F1292, appropriate for the fall height of each structure and specification F1951 where applicable.
8. WARNING: Make certain that the playground is clearly visible for proper supervision.
9. WARNING: Never allow a child to climb out onto a roof or any other surface not intended for climbing.
10. WARNING: All playground equipment and rubber safety surfacing may become hot enough to cause burns. Check for hot surfaces before allowing children to play. Children should wear appropriate shoes at all times. When possible place equipment under shade and face equipment such as slides to the North.
11. WARNING: Instruct children not to walk too close to, in front of, behind or between moving items.
12. WARNING: Instruct children not to twist swing chains or loop them over the top of the support bar since it may reduce the strength of the chain.
13. WARNING: Instruct children to avoid swinging empty seats.
14. WARNING: Teach children to sit in the center of swings with their full weight on the seats.
15. WARNING: Instruct children not to use the equipment in a manner other than intended.
16. WARNING: Instruct children not to get off equipment while it is in motion.
17. WARNING: Dress children appropriately (examples would include the use of well fitting shoes and avoid ponchos, scarves, hooded sweat shirts, draw strings and other loose fitting clothing that is potentially hazardous while using equipment).
18. WARNING: Never allow a child to wear a bicycle or any other type of helmet when using the playground. These can present a serious strangulation hazard to children.
19. WARNING: Instruct children not to climb when equipment is wet.
20. WARNING: Verify that suspended climbing ropes, chain or cable are secure at both end, or cable cannot be looped back on itself.
21. WARNING: Instruct children not to attach items to the playground equipment that are not specifically designed for use with the equipment, such as, but not limited to, jump ropes, clothes line, pet leashes, cables and chain as they may cause a strangulation hazard.
22. Cut off protruding bolts, smooth over all sharp points or edges, and close open “S” hooks. Check for openings.
23. Warning labels & signs shall be replaced by the owner / when they no longer meet legibility requirements. Call 1-877-807-7529 or write info@bearsplaygrounds.com for replacements.

Warranty

Warranty

10 YEARS STRUCTURAL WARRANTY on all Cedar Log Structural Parts, Floors Decks, that comprise Bears Cedar Log Playground Structures.

5 YEARS: on all Super Duty Plastic Slides, Wire Cable Rope, Steel Parts and Accessories.

2 YEARS on all Hand Carved and Natural Wood Products such as Carved Mushrooms, Tables and Chairs, Tree Hoppers, Tree Cowboy play events, Etc.

1 YEAR on all Barrier Nets, Fabric Roofs, Rope, Sand Box Covers, Standard and Premium Duty Plastic Slides and Parts. Moving Parts, such as swings, spinners, panels, and other parts not covered above.

Terms and Conditions: The warranty provides for defects in workmanship and materials from the date of purchase. Warranty as stated above will cover the cost of the specific replacement part only to the original owner. Premature wood rot is covered under the warranty, to the extent required to make the piece functional or to prohibit structural failure within the warranty period, (provided maintenance recommendations are followed and documented). We make no other guarantee or warranty of any kind, including implied warranty of merchantability or fitness for a particular purpose, with respect to the services we perform or the equipment we provide under this agreement. We are not liable to you or any other person or party for direct, indirect, special, incidental or consequential damages. Shipping and installation cost are not included in the warranty. This warranty does not cover damage caused by vandalism, cosmetic issues, stain or paint, fading, light surface rust, weathering, cracking, checking or maintenance issues. The owner or manager must follow the Operating Instructions, Maintenance Instructions & Check List. Cedar Logs and other natural wood material have natural characteristics like checking, taper in the logs from one end to the other, bends, curves, etc. These characteristics are normal, natural, and even desirable to provide organic character to each piece. They do not affect structural integrity and are therefore not covered by our warranty. Warranted parts must be subject to normal use, no unusual stresses i.e. encounters with lawn mowers, fires, vehicles, fires, lightning bolts, floods, hurricanes, tornados, vandalism, misuse, neglect, accidents or acts of god, etc are not covered by warranty. Rotting wood is only covered to the extent that it will cause structural failure within the warranty period. At our discretion we may ask for digital images of the affected part and accurate measurements be taken so replacement parts can be made and / or we may ask for the return of the defective part.

Bears Playgrounds works very hard to ensure that the products we provide are safe. If however concerns or issues are discovered during audits or inspections Bears will work with the owner or inspector on designing a fix. Costs for replacement wooden parts will be discounted to the owner. Under no circumstances will shipping, installation, or crew mobilization be covered by this warranty.

CPSC now recommends a minimum of 9"-12" of loose fill safety surfacing material be installed and maintained in the use zone for safety. Safety surfacing package is to be “by others” unless specially included for an optional extra charge at the time of order. Acceptance of this proposal means that you accept Bears Playgrounds terms and conditions as described on the web site www.bearsplaygrounds.com

The Americans with Disabilities Act (ADA) may require that you make your park and / or playground accessible when viewed in its entirety. Please consult your legal counsel to determine if the ADA applies to you. For playground equipment to be considered accessible, accessible surfacing must be utilized in applicable areas. Although a particular playground design may not meet the proposed Access Board Regulations in regards to the appropriate number of ground level events, the actual playground may be in compliance when considering existing play components.

Not all equipment may be appropriate for all children, even when designed for a target age group. To avoid injury you should closely supervise and participate in the child’s use of this equipment, especially while learning to use it. Proper supervision is required.

Owner agrees to and is responsible for Suggested General Maintenance Checklist and Operating Instructions found in the Product Brochure and most current version on our web site www.bearsplaygrounds.com. Inspect this unit and correct any safety issues before each use. The Owner / Contracting Agency are responsible for any and all permits required. If in-ground footers are required for this project the owner is responsible to check with the utilities to ensure the playground will not interfere. The owner is responsible for any damage caused by conflicts with buried utilities. If Bears is installing, a clear path accessible by installation equipment into your desired location is essential. Bears Playgrounds cannot be held responsible for damage to the grounds while trying to access the installation area. Regardless of who installs the product, the owner agrees to be responsible for determining placement and for providing adequate, safe, “use zones” around the structure and safety surfacing. Owner agrees to defend and hold harmless Bears Playgrounds against any claim or liability with respect to the use of these products or services. In the event of any loss or injury to any person or property, you agree to look exclusively to your insurer to recover damages. You agree that we and our agents, owners, employees, subsidiaries, affiliates, officers and directors are exempt from liability for loss, damage, injury or other consequence arising directly or indirectly from the services we perform or equipment we provide under this contract. If it is determined that we are directly responsible for loss, damage, injury or other consequence, you agree that damages shall be limited to the lessor of \$1,000 or the price you paid us under this contract. These agreed upon damages are not a penalty. They are your sole remedy no matter how the loss is caused or fault. In the event any lawsuit or other claim is filed by any party against us or our agents, owners, employees, subsidiaries, affiliates, officers and directors arising out of the services we perform or equipment we provide under this contract, you agree to be solely responsible for, and indemnify and hold us completely harmless from such lawsuit or other claim including your payment of all damages, expenses, costs and attorney’s fees. These obligations survive the expiration or termination of this contract. The Limited Warranty is included in the Product Catalog. We make no other guarantee or warranty of any kind, including implied warranty of merchantability or fitness for a particular purpose, with respect to the services we perform or the equipment we provide under this contract. We are not liable to you or any other person or party for direct, indirect, special, incidental or consequential damages. This transaction may be cancelled without penalty within 3 days of agreement. After 3 days but before a product is shipped the transaction may be cancelled subject to a 25% restocking fee. Once delivered and or installed this product may not be returned. If payment is not made when due, interest will accrue at a rate of 1.7% per month from the due date. In the advent of legal action in the process of collections, you agree to pay all costs and expenses of collection, including reasonable attorney’s fees, whether or not litigation is commenced.

Updated 9-28-2015

Testimonials

"We're loving our playground! Just wanted to share a photo from the whole family Christmas morning when we presented it.. Thanks again. So happy we could return some of the joy you brought us! It was a pleasure working with you as well and we wish you all the best!"



"Thanks for the equipment. It blended in with our nature park and kids love it!"

"The Readsboro PTG was very pleased with the attention to detail that Bears Playgrounds gave to us as we worked with them to figure out what kind of structure would work best at our school in southern Vermont. We were drawn to Bears because of the natural materials, which fit in perfectly with our rural surroundings. As well, the fun details such as the crooked stairs and rock climbers add tons of joy! The staff was helpful and professional. We highly recommend them to anyone!!! Thanks again!"



"I just wanted to tell you directly how happy we are with the play structure – it's beautiful and will clearly last for many years to come. We've already had many people stop by to express how excited they are for this in our community and how beautiful it is. I especially wanted to tell you how impressed we were with the 2 young men who set up the structure. They were professional, respectful, cheerful despite the incredibly hot weather and best of all, they patiently answered all our questions to our satisfaction. You have 2 very hard working, top notch employees. Thanks again"



"Hampden is a very rural town and our park is very wooded with hiking trails. I really wanted to avoid the metal and plastic models and keep the natural look and beauty. I came across the Bears website and after 15 minutes of reading up on their products, installation and maintenance plans I knew my search was over. Overall I have nothing but an extremely positive review of Bears Playgrounds. Extremely easy and pleasant to work with starting with their website and up through the office staff, designers and installers. Most of all I was very impressed with their customer service. They will work with you to provide a product out of their factory or create whatever it is you would like. Thanks to all at Bears for all you did."



Testimonials

"Bears built and installed a custom Dreamin' Really Big playground at Glade Springs Resort last week. I spent 6 months looking at commercial playgrounds and was not happy with any I researched. Being an outdoor adventure resort the metal/plastic look just didn't fit the look we were going for. Also, with the money we had to spend we didn't feel like we were getting much of a structure. On November 21st after 6 months of playground shopping I told the owners of the resort I wasn't happy with any of the structures I had presented them so far. So the search for a playground continued. That afternoon I happened to see a google image of a playground Bears had installed and knew it was exactly what we were looking for. I called and spoke with their operations manager and described what we wanted and had a design the next day. After a couple emails and face time calls with the vice president and operations manager we had a design we loved that fit our site. Being a very experienced landscaper and golf course superintendent I originally thought we would install ourselves. After some thought and wanting a structure that would outlast me at the resort I decided to have Bears do the install as well. Their install crew was top notch. What took them 5 days to install would have taken us 3 weeks. The knowledge the install leader had about Bears playgrounds and laws/insurance regulations made me realize that getting Bears to install was a great decision. Cost a little more but well worth it in the long run. I would definitely recommend Bears and if I ever have another playground to build they will be my only call. We originally was trying to stay away from a natural wood playground due to our thinking that a metal/plastic structure would be maintenance free and last longer. After seeing a couple 5 year old metal/plastic structures and seeing rust where paint was scratched/chipped and what the sun had done to the plastic, I realized the cedar logs Bears uses is truly more maintenance free than metal/plastic. Bears Playgrounds has a very good product with a great staff to complement their playgrounds."



"These guys are top notch. If every company was as communicative and on time and eager to please as Bears Playgrounds, the business world would be a better place. Can't say enough about [the install crew] and their professionalism and helpfulness during installation. [The Office] was as good as it gets related to scheduling and pricing. Way to go, Bears!!



"Bristol Harbour Village is thrilled with its recent purchase of a Bears Playground. We looked at various playground options and found Bears to be the best value for the money. As the village representative, I worked closely with the folks at Bears. They were professional and energetic, and took a personal interest in our project. They kept us up to date during the design and build process, including pictures. They even delivered and installed our playground two days early! The installation crew was excellent. Despite foul weather, they showed up on time and worked diligently throughout the day. They eagerly communicated with site management and took the time to review care maintenance with me. Comments from village residents has been all positive. Our new play set exceeds our expectations and we highly recommend a Bears Playground."



About Us

The Bears Story . . .

Bears Playgrounds is a family owned business started by Danny and Marcye Bears in 1999. Danny and Marcye have always been motivated by . . .

- a genuine love of children (all children but especially their own children)
- a passion for the outdoors (especially playing outdoors) and
- the sense of pride and accomplishment gained by creating and building the greatest outdoor play products in the universe . . .

Through their tireless hard work and determination, Bears Playgrounds was born. Danny and Marcye began working out of their home, selling, manufacturing, and installing playgrounds all on their own. Over the years it continued to grow. What began as a local operation turned into a nationwide dream. Danny and Marcye moved their business into 5 farm buildings, and then eventually in 2008 moved again into a 36,000 square foot shop.

In 2016, the Bears Playgrounds family suffered a great loss with the unexpected passing of Danny Bears. To keep his memory alive, Marcye Bears and her team re-dedicated themselves to work to carry on with Danny's vision and continue to create the most beautiful nature inspired playgrounds for children everywhere.

In 2018, Bears Playgrounds expanded again by adding a 10,500 square foot building for additional office and manufacturing space, along with a new expanded display yard.



Today, the Bears Playground Crew consists of a complete team of outdoor play professionals. President Marcye Bears and Vice President Trey Socash are participating members of a technical subcommittee for the American Society of Testing and Materials (ASTM). ASTM writes industry standards for hundreds of industries, including playgrounds. Additionally, ten members of the Bears team are trained and tested Certified Playground Safety Inspectors (CPSI). So, while we do not write the rule book on playground safety, we certainly do our part to help. In addition, we are also members of the International Playground Contractors Association, International Playground Equipment Manufacturers Association (IPEMA), and Global Re-Leaf (an organization that plants trees for ecosystem restoration).

Capabilities

We like to think of ourselves as small enough to really, truly care about your project; and big enough to pull it off smoothly. Our shops combine to provide 46,500 square feet of space with five loading docks and 14' overhead doors to make shipping nationwide a breeze. We are able to assemble custom

orders indoors, before we load up and hit the road for an installation. This helps ensure quality. To ensure the best possible service, we control as many of the processes and manufacture as many of the parts and pieces "in house" as possible. That means a quality experience throughout the entire process and the best possible price.

Our reputation, and website, www.BearsPlaygrounds.com, have earned us customers from

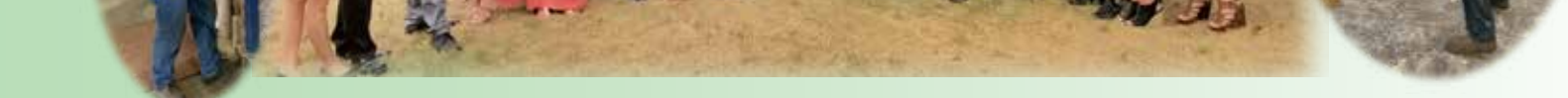
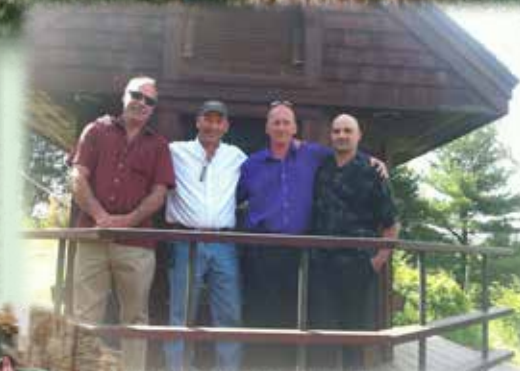
coast to coast and around the world. So whether you are looking for design help, safety surfacing or just the greatest outdoor play products available, the playground crew at Bears is at your service.

You can find our playgrounds in all 50 states, as well as Canada, Cairo Egypt, Morocco, the Cayman Islands, Sint Maarten, Punta Cana DR and more!



The Bears Playgrounds complex in Lima, NY

About Us



In loving memory of Danny Bears

Danny, Marcye and the entire Bears Playgrounds Crew have worked tirelessly with great commitment to build this amazing company based on their love of children, fun and nature.

Danny's passion, energy and spirit will be forever missed. No words can adequately express our sadness that Danny is no longer with us, or our gratitude for the opportunity to have worked with him.

We will honor his memory by dedicating ourselves to working as a team to continue on with his vision, and to build these amazing playgrounds that he loved so much.

